

# TRAVEL COMMUNE



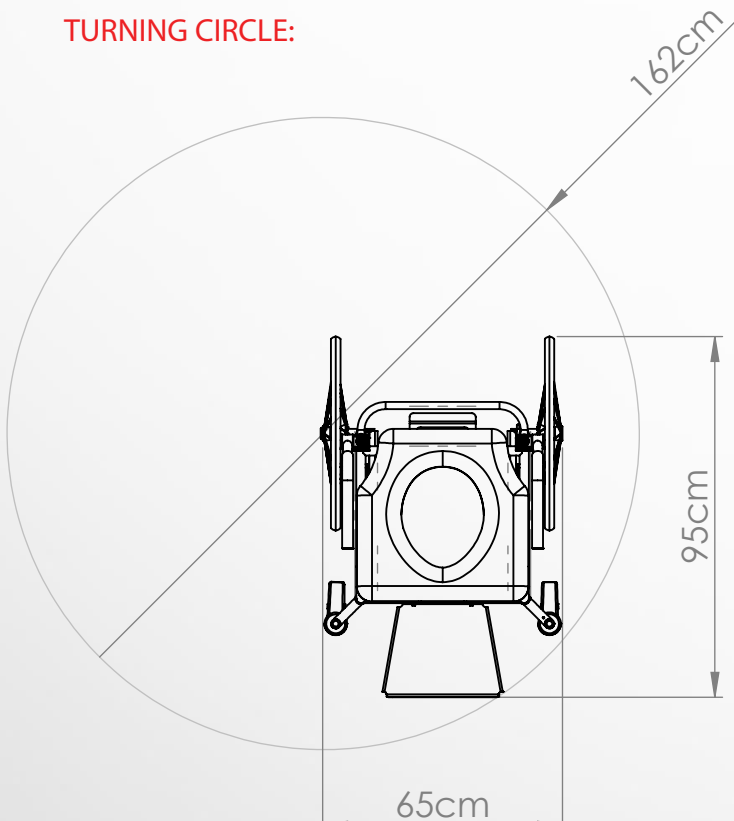
## Safe use, operation and maintenance.

The Tuki Travel Commode has a maximum user weight of 120kg and is intended for limited use and is NOT designed for everyday use.

Rear wheel tires are solid and require no checking or adjusting of tire pressure

Castor wheel axle/bearings are fully sealed and are maintenance free, lubrication of castor pintles should be carried out by an approved technician.

## TURNING CIRCLE:



## Key Features:

- High grade anodised aluminum frame
- Flip-over armrests for easy transfers
- Handmade fully padded memory foam seat with desired cut-out/bite
- Quick drying canvas backrest
- Side frame cutaways
- Self propelled wheels and quick-release axles
- Durable and easy to clean design
- Front braking medical grade castors
- Flip-up footplate with adjustable height
- Clearance for positioning over toilet
- Snap on rear attendant castors
- Simple setup & pack-down
- Durable canvas wheelie bag

## Specifications:

- \* Weight 14kg (In Bag)
- \* Weight limit 120kg
- \* Overall Dimensions 28.5 x 24.5 x 38" (Standard LxWxH)
- \* Custom wheel size (standard 20 or 22")
- \* Custom seat width (standard - 18")
- \* Custom seat height (standard - 20")
- \* Custom seat length (standard - 16")
- \* Custom seat rake (standard 1/2")
- \* Custom back angle (4 deg standard)

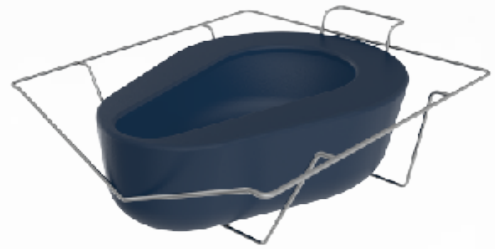
## Optional Extras:

- \* Backrest: Canvas (standard) or tension adjustable
- \* Seat Padding: 1/2 or full gel overlay
- \* Footplate: Centre mount flip up (standard), dual swing away or drop in.
- \* Brakes: Composite scissor lock.
- \* Armrests: Swing over (standard)
- \* Light-weight travel bedpan & carrier

# COMMODOE PRODUCTS

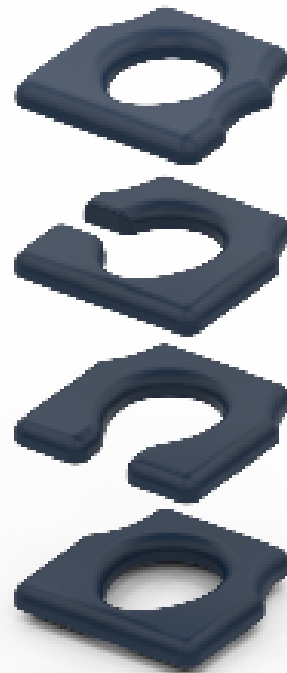
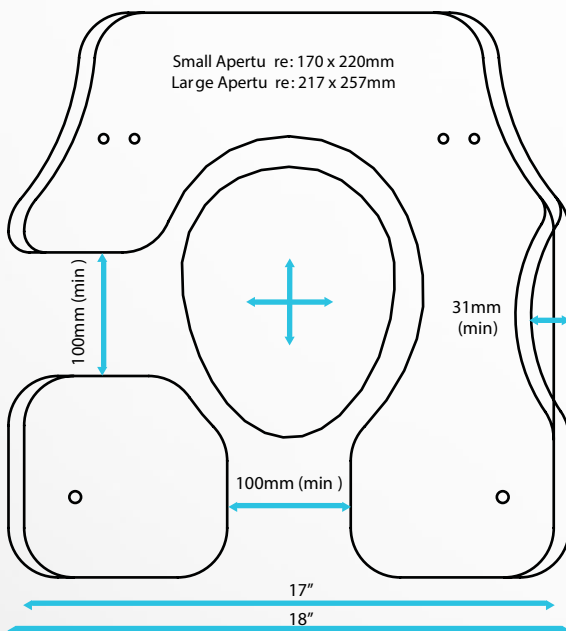
## TUKI Bedpans & Carriers

- \* Bedpan Options available for all TUKI Commodes including a portable option for our travel commode
- \* Frame cutaways to suit seat cutouts/bites.



## TUKI COMMODOE SEATS

- Standard Seat
- Left/Right/Front Cutouts
- Left & Right/Front Bites
  - \* Two aperture sizes (small & std)
  - \* Custom seat widths/lengths
  - \* Fully padded with memory foam
  - \* Half & Full gel overlay options for added comfort
  - \* Durable anti-bacterial upholstery
  - \* Hand made in New Zealand





## Armrests:

- Gutter Pads
- Extended Pads
- Foam Wrap Pads
- Waterfall Pads
  - \* Swing-over, T Style (Drop in) and Heavy Duty styles available
  - \* Made from high grade brushed stainless steel or anodised aluminum resistant to corrosion from water and soap scum



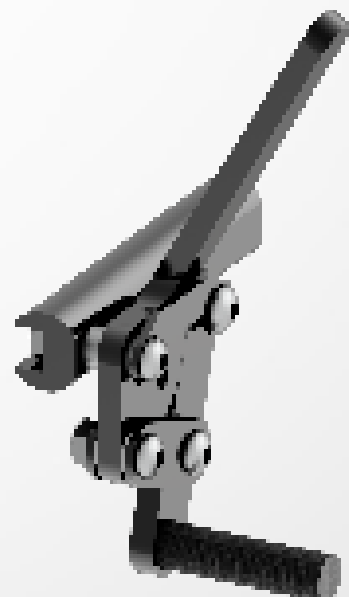
## Foot-plates:

- Flip Up
- Swing Away Paddles (Drop In)
- Drop in one piece cage
  - \* Custom footplate padding options available
  - \* Made from high grade brushed stainless steel, anodised aluminum and acetate. Resistant to corrosion from water and soap scum



## Brakes:

- Push to lock (Durable Aluminum construction)
- Pin Lock
- Light-weight composite brakes (Scissor lock brakes)



# COMMODE

## PRODUCTS



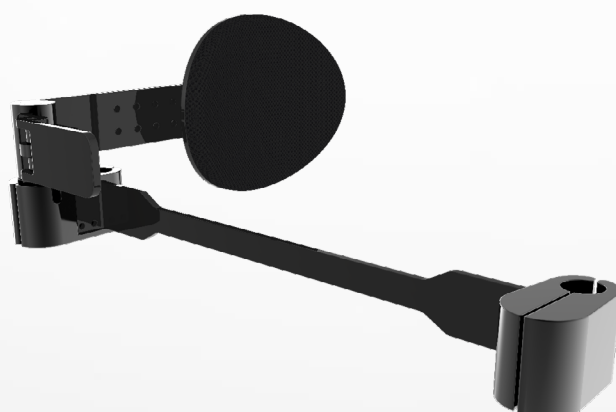
### Backrests

- Light-weight canvas backrest (standard with all Tuki Commodes)
  - Tension Adjustable Padded Backrest
  - Hardshell Padded backrest
- \* All padded backrests feature medical grade memory foam
- \* Made from corrosion resistant powder-coated aluminum and anti-bacterial fabrics.



### Laterals & Guides

- Swing Away Lateral Support
- Swing Away Lateral Support Heavy Duty
- Thigh Guide





## Wheels & Castors

- Snap on attendant castors
  - \* Quick release axle fitting
  - \* Simple to swap out self propelled commode wheels for attendant castors when space is tight.
  - \* Durable anodised aluminum and stainless steel construction with medical grade castor wheels
- Rear Self Propelled Spinergy Wheels
  - \* Various sizes (20 & 22" STD)
  - \* Puncture free tires
  - \* ABS bearings to prevent deterioration
- Fixed attendant castors
  - \* If self propelled wheels aren't required, commode can be custom fitted with fixed braking attendant castors



Notes:

Notes: