

FOLDING COMMODE



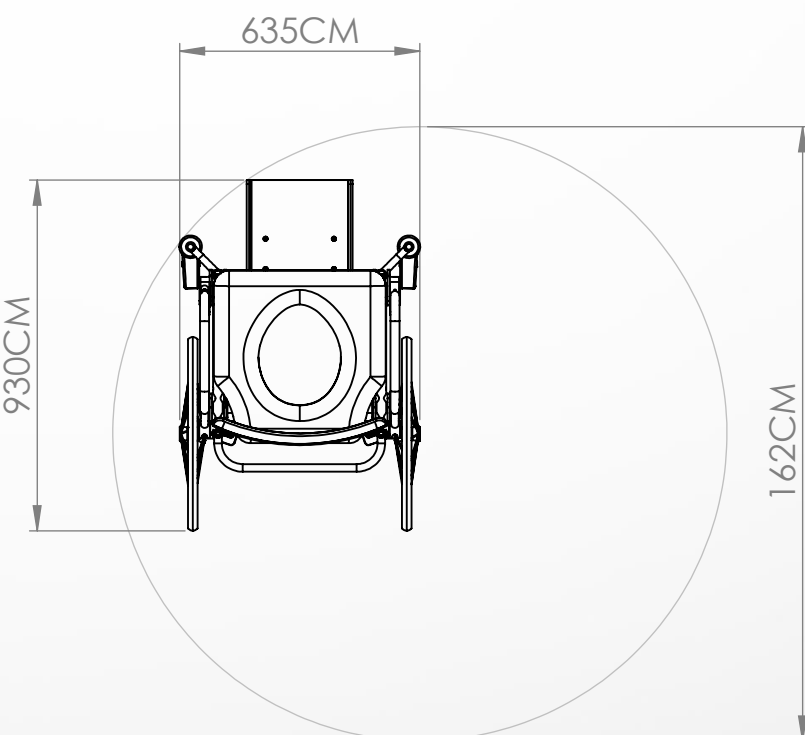
Safe use, operation and maintenance.

The Tuki Folding Commode has a maximum user weight of 140kg and is designed for everyday use.

Rear wheel tires are solid and require no checking or adjusting of tire pressure

Castor wheel axle/bearings are fully sealed and are maintenance free, lubrication of castor pintles should be carried out by an approved technician.

TURNING CIRCLE:



Key Features:

- High grade stainless steel frame
- Swing over armrests for easy transfers
- Handmade fully padded memory foam seat with desired cut-out/bite
- Quick drying canvas backrest
- Front and side frame cutaways
- Self propelled wheels and quick-release axles
- Durable and easy to clean design
- Front braking medical grade castors
- Flip-up footplate with adjustable height
- Clearance for positioning over toilet
- Simple folding mechanisms for portability and storage.
- Heavy duty canvas roller bag for transport

Specifications:

- * Weight 20kg
- * Weight limit 140kg
- * Overall Dimensions 28.5 x 24.5 x 38" (Standard LxWxH)
- * Custom wheel size (standard 20 or 22")
- * Custom seat width (standard - 18")
- * Custom seat height (standard - 20")
- * Custom seat length (standard - 16")
- * Custom seat rake (standard 1/2")
- * Custom back height (standard 17 1/4")
- * Custom back angle (standard 0 deg)

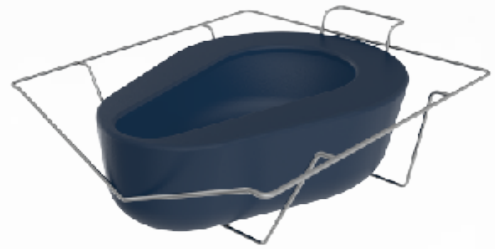
Optional Extras:

- * Backrest: Canvas (standard), hardshell or tension adjustable
- * Quick release braking attendant castors
- * Seat Padding: 1/2 or full gel overlay
- * Footplate: Center mount flip up (standard), dual swing away or drop in one piece cage
- * Brakes: Push to lock (standard), composite scissor lock or pin lock.
- * Armrests: Swing over (standard), drop-in tee style, gutter armrests
- * Bedpan & carrier

COMMODE PRODUCTS

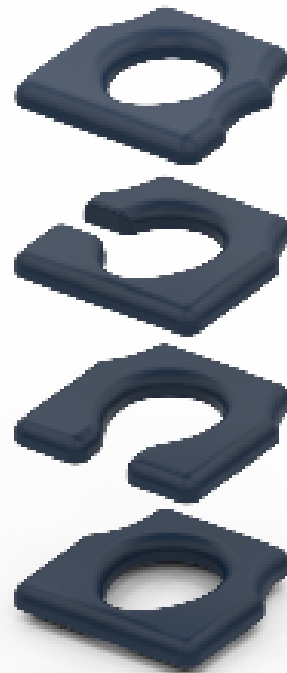
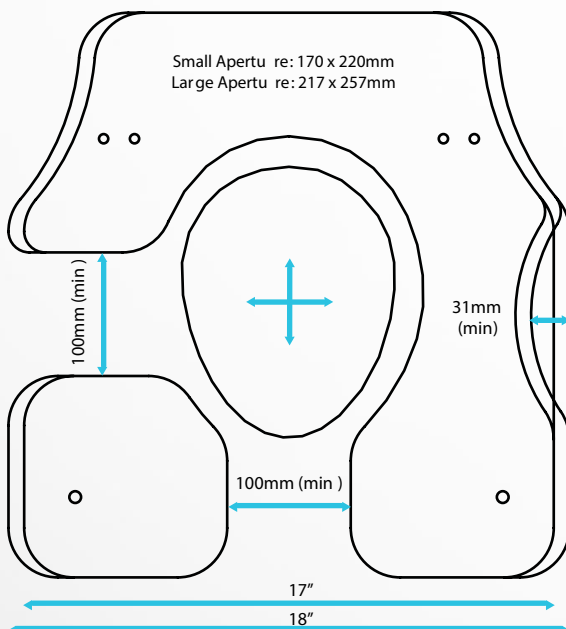
TUKI Bedpans & Carriers

- * Bedpan Options available for all TUKI Commodes including a portable option for our travel commode
- * Frame cutaways to suit seat cutouts/bites.



TUKI COMMUNE SEATS

- Standard Seat
- Left/Right/Front Cutouts
- Left & Right/Front Bites
 - * Two aperture sizes (small & std)
 - * Custom seat widths/lengths
 - * Fully padded with memory foam
 - * Half & Full gel overlay options for added comfort
 - * Durable anti-bacterial upholstery
 - * Hand made in New Zealand





Armrests:

- Gutter Pads
- Extended Pads
- Foam Wrap Pads
- Waterfall Pads
 - * Swing-over, T Style (Drop in) and Heavy Duty styles available
 - * Made from high grade brushed stainless steel or anodised aluminum resistant to corrosion from water and soap scum



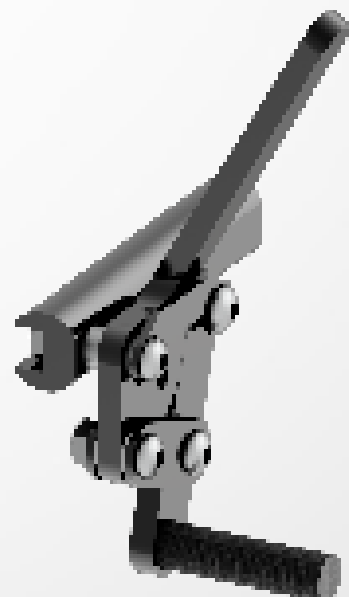
Foot-plates:

- Flip Up
- Swing Away Paddles (Drop In)
- Drop in one piece cage
 - * Custom footplate padding options available
 - * Made from high grade brushed stainless steel, anodised aluminum and acetate. Resistant to corrosion from water and soap scum



Brakes:

- Push to lock (Durable Aluminum construction)
- Pin Lock
- Light-weight composite brakes (Scissor lock brakes)



COMMODE

PRODUCTS



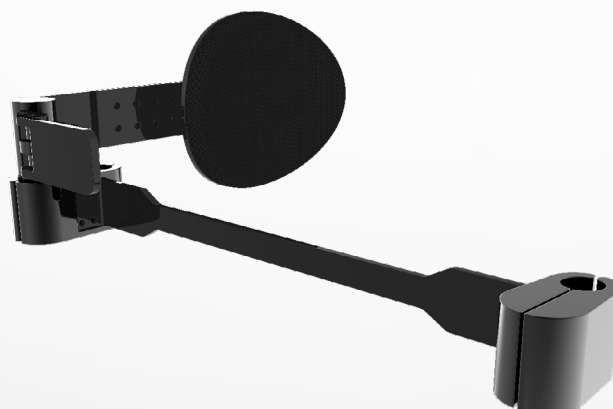
Backrests

- Light-weight canvas backrest (standard with all Tuki Commodes)
 - Tension Adjustable Padded Backrest
 - Hardshell Padded backrest
- * All padded backrests feature medical grade memory foam
- * Made from corrosion resistant powder-coated aluminum and anti-bacterial fabrics.



Laterals & Guides

- Swing Away Lateral Support
- Swing Away Lateral Support Heavy Duty
- Thigh Guide





Wheels & Castors

- Snap on attendant castors
 - * Quick release axle fitting
 - * Simple to swap out self propelled commode wheels for attendant castors when space is tight.
 - * Durable anodised aluminum and stainless steel construction with medical grade castor wheels
- Rear Self Propelled Spinergy Wheels
 - * Various sizes (20 & 22" STD)
 - * Puncture free tires
 - * ABS bearings to prevent deterioration
- Fixed attendant castors
 - * If self propelled wheels aren't required, commode can be custom fitted with fixed braking attendant castors



Notes:

Notes: